

Feed Storage and Delivery Systems

SIX (6), SEVEN (7), NINE (9), TWELVE (12), FIFTEEN (15)
AND EIGHTEEN (18) FOOT DIAMETER HOPPER
BOTTOM BINS

2.25" (55MM), 3.00" (75MM), 3.50"
(90MM), AND 3.50" (90MM HIGH
MOISTURE) FILL SYSTEMS



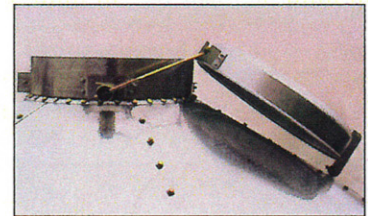
SIDE LADDERS

Are attached to allow plenty of space between rungs and bin wall for a firm footing.



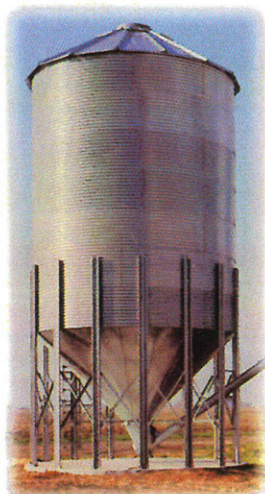
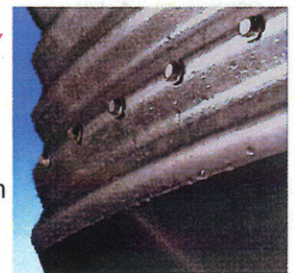
BIN LEGS

Are formed from heavy, all galvanized steel and are designed to give superior fit, finish and durability.

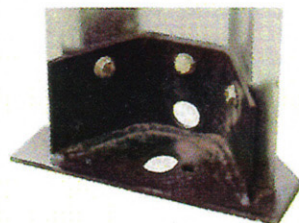


Two opener options - Spring lid slides away from truck auger or flip top and chain.

Moisture is directed away from our tapered hopper which tucks under the sidewall.

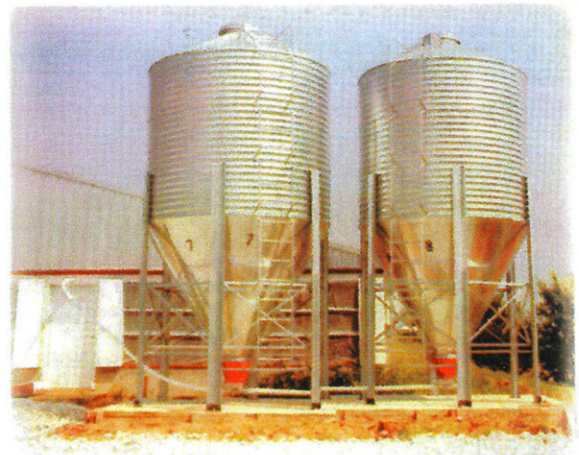


Our 15 and 18' bins feature ribbed roofing. Ribs are fully double overlapped for strength and moisture resistance.



LEG ANCHOR

Gives greater stability, yet it is simple to install.



SIX (6) FOOT (1.83m) DIAMETER BINS WITH 30 DEGREE ROOF, 60 DEGREE CENTER DRAW HOPPER TO 16" (40.6cm) OPENING

MODEL NUMBER	DESCRIPTION	2000 LB TONS	METRIC TONS	CUBIC FT (METERS)	BUSHEL	DISCHARGE HEIGHT	FILL HEIGHT	SHIPPING WT. LBS (Kg)
BB601	6 ft. (1.83m) Dia./One 32" (81.3cm) Ring, 2.66" (6.76cm) Corrugation	2.9	2.6	145.1 (4.1)	116	26 1/2" (67.3cm)	10' - 2 3/4" (3.12m)	464 (210.9)
BBL601	Ladder Kit for BB601							29 (12.3)
BB6015	6 ft. (1.83m) Dia./One 44" (111.8cm) Ring, 4.00" (10.16cm) Corrugation	3.5	3.2	175.2 (5)	140	26 1/2" (67.3cm)	11' - 2 3/4" (3.42m)	486 (220.9)
BBL6015	Ladder Kit for BB6015							29 (13.2)
BB602	6 ft. (1.83m) Dia./Two 32" (81.3cm) Rings, 2.66" (6.76cm) Corrugation	4.4	4.0	220.1 (6.2)	176	26 1/2" (67.3cm)	12' - 10 3/4" (3.93m)	601 (273.2)
BBL602	Ladder Kit for BB602							35 (15.9)
BB603	6 ft. (1.83m) Dia./Three 32" (81.3cm) Rings, 2.66" (6.76cm) Corrugation	5.9	5.4	295.1 (8.4)	236	26 1/2" (67.3cm)	15' - 6 3/4" (4.74m)	738 (335.5)
BBL603	Ladder Kit for BB603							43 (19.5)
986-2508K	32" (81.3m) Mid-Top Ring for 6 Foot Bin							

SEVEN (7) FOOT (2.13M) DIAMETER BINS WITH 30 DEGREE ROOF, 67 DEGREE CENTER DRAW HOPPER TO 16" (40.6CM) OPENING. ALL 2.66" (6.76CM) CORRUGATION

MODEL NUMBER	DESCRIPTION	2000 LB TONS	METRIC TONS	CUBIC FT (METERS)	BUSHEL	DISCHARGE HEIGHT	FILL HEIGHT	SHIPPING WT. LBS (Kg)
BB701	7 ft. (2.13m) Dia./One 32" (81.3cm) Ring	4.6	4.2	229.8 (6.5)	184	26 1/2" (67.3cm)	13' - 10 1/2" (4.23m)	694 (315.5)
BBL701	Ladder Kit for BB701							43 (19.5)
BB702	7 ft. (2.13m) Dia./Two 32" (81.3cm) Rings	6.7	6.1	332.3 (9.4)	266	26 1/2" (67.3cm)	16' - 6 1/2" (5.04m)	829 (376.8)
BBL702	Ladder Kit for BB702							51 (23.2)
BB703	7 ft. (2.13m) Dia./Three 32" (81.3cm) Rings	8.7	7.9	434.8 (12.3)	348	26 1/2" (67.3cm)	19' - 2 1/2" (5.85m)	964 (438.2)
BBL703	Ladder Kit for BB703							59 (26.8)
BB704	7 ft. (2.13m) Dia./Four 32" (81.3cm) Rings	10.8	9.8	537.3 (15.2)	430	26 1/2" (67.3cm)	21' - 10 1/2" (6.67m)	1099 (499.5)
BBL704	Ladder Kit for BB704							70 (31.8)
980-2703K	32" (81.3m) Mid-Top Ring for 7 Foot Bin							

NINE (9) FOOT (2.74M) DIAMETER BINS WITH 30 DEGREE ROOF, 60 DEGREE CENTER DRAW HOPPER TO 16" (40.6CM) OPENING. ALL 2.66" (6.76CM) CORRUGATION

MODEL NUMBER	DESCRIPTION	2000 LB TONS	METRIC TONS	CUBIC FT (METERS)	BUSHEL	DISCHARGE HEIGHT	FILL HEIGHT	SHIPPING WT. LBS (Kg)
BB901	9 ft. (2.74m) Dia./One 32" (81.3cm) Ring	7.8	7.1	390.2 (11.1)	312	27" (68.6cm)	14' - 6 3/4" (4.44m)	1024 (465.5)
BBL901	Ladder Kit for BB901							56 (28.5)
BB902	9 ft. (2.74m) Dia./Two 32" (81.3cm) Rings	11.3	10.3	565.4 (16.0)	452	27" (68.6cm)	17' - 2 1/4" (5.24m)	1218 (553.6)
BBL902	Ladder Kit for BB902							64 (39.1)
BB903	9 ft. (2.74m) Dia./Three 32" (81.3cm) Rings	14.7	13.3	735.1 (20.8)	588	27" (68.6cm)	19' - 10 1/4" (6.05m)	1412 (641.8)
BBL903	Ladder Kit for BB903							72 (32.7)
BB904	9 ft. (2.74m) Dia./Four 32" (81.3cm) Rings	18.1	16.4	905.6 (25.6)	725	27" (68.6cm)	22' - 6 3/4" (6.88m)	1605 (729.5)
BBL904	Ladder Kit for BB904							80 (36.4)
BB905	9 ft. (2.74m) Dia./Five 32" (81.3cm) Rings	21.4	19.4	1070.3 (30.3)	856	27" (68.6cm)	25' - 2 1/4" (7.68m)	1782 (810.0)
BBL905	Ladder Kit for BB905							88 (40.0)
980-2604K	32" (81.3m) Mid-Top Ring for 9 Foot Bin							

TWELVE (12) FOOT (3.66M) DIAMETER BINS WITH 30 DEGREE ROOF, 45 DEGREE CENTER DRAW HOPPER TO 16" (40.6CM) OPENING. ALL 2.66" (6.76CM) CORRUGATION

MODEL NUMBER	DESCRIPTION	2000 LB TONS	METRIC TONS	CUBIC FT (METERS)	BUSHEL	DISCHARGE HEIGHT	FILL HEIGHT	SHIPPING WT. LBS (Kg)
BB1202	12 ft. (3.66m) Dia./ Two 32" (81.3cm) Rings	22.3	20.3	1116.1 (31.6)	893	27" (68.6cm)	20' - 9" (6.32m)	2444 (1110.9)
BBL1202	Ladder Kit for BB1202							55 (25.0)
BB1203	12 ft. (3.66m) Dia./Three 32" (81.3cm) Rings	28.4	25.8	1418.9 (40.2)	1135	27" (68.6cm)	23' - 5" (7.14m)	2699 (1226.8)
BBL1203	Ladder Kit for BB1203							63 (28.6)
BB1204	12ft. (3.66m) Dia./Four 32" (81.3cm) Rings	34.4	31.2	1721.7 (48.8)	1377	27" (68.6cm)	26' - 1" (7.95m)	2941 (1336.8)
BBL1204	Ladder Kit for BB1204							71 (32.3)
BB1205	12 ft. (3.66m) Dia./Five 32" (81.3cm) Rings	40.5	36.7	2024.5 (57.3)	1620	27" (68.6cm)	28' - 9" (8.76m)	3299 (1499.5)
BBL1205	Ladder Kit for BB1205							79 (85.9)

Capacities are calculated using 40 pounds per cubic foot; 50 pounds per bushel

NOTICE

Our hopper bottom bins are designed for the storage of free flowing materials having a density of no more than 40 pounds per cubic foot. Soybean meal, meat scraps and certain other materials are NOT considered to be free flowing and should NOT be stored in our bins.

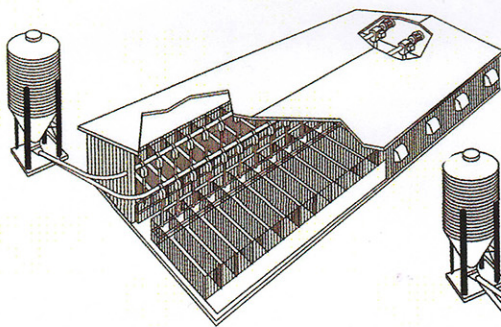
FIFTEEN (15) FOOT (4.57M) DIAMETER BINS WITH 35 DEGREE ROOF, 45 DEGREE CENTER DRAW HOPPER TO 16" (40.6CM) OPENING. ALL 4.00" (10.16CM) CORRUGATION DISCHARGE HEIGHT - 29.0" (73.7CM)

MODEL NUMBER	DESCRIPTION	2000 LB. TONS	METRIC TONS	CUBIC FEET (METERS)	BUSHEL	FILL HEIGHT	SHIPPING WT. LBS. (KG)
HWH54	15 FT. (4.57m) Dia./Four 44" (111.8cm) Rings	67.5	74.5	3375(95.5)	2700	29'3" (8.92m)	5088 (2312.7)
HWHL54	Ladder Kit for HWH54						81 (36.8)
HWH55	15 ft. (4.57m) Dia./Five 44" (111.8cm) Rings	82.5	91.0	4125(116.8)	3300	32'11" (10.05m)	5559 (2513.2)
HWHL55	Ladder Kit for HWH55						89 (40.5)
HWH56	15 ft. (4.57m) Dia./Six 44" (111.8cm) Rings	95.0	104.8	4750(134.5)	3800	36'7" (11.15m)	6276 (2852.7)
HWHL56	Ladder Kit for HWH56						97 (44.1)

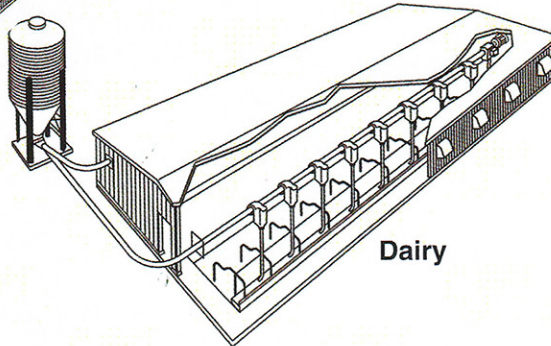
EIGHTEEN (18) FOOT (5.5M) DIAMETER BINS WITH 35 DEGREE ROOF, 45 DEGREE CENTER DRAW HOPPER TO 16" (40.6CM) OPENING. ALL 4.00" (10.16CM) CORRUGATION, DISCHARGE HEIGHT - 29.0" (73.7CM)

MODEL NUMBER	DESCRIPTION	2000 LB. TONS	METRIC TONS	CUBIC FEET (METERS)	BUSHEL	FILL HEIGHT	SHIPPING WT. LBS. (KG)
HWH64	18 FT. (5.5cm) Dia./Four 44" (111.8cm) Rings	102.5	93.0	5125(145.0)	4100	31'-1" (9.70m)	7185(3265.9)
HWHL64	Ladder Kit for HWH64						91(41.1)
HWH65	18 ft. (5.5m) Dia./Five 44" (111.8cm) Rings	122.5	111.2	6125(173.3)	4900	35'-6"(10.8m)	7923(3601.4)
HWHL65	Ladder Kit for HWH65						99(45.0)
HWH66	18 ft. (5.5m) Dia./Six 44" (111.8cm) Rings	142.5	129.3	7125(201.6)	5700	39'-2"(11.9m)	8906(4048.2)
HWHL66	Ladder Kit for HWH65						107(48.6)

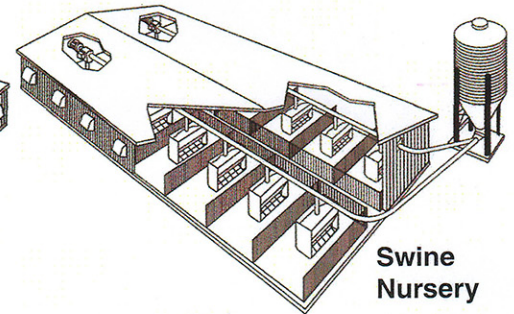
**Dura-Flex™ Fill Systems
Most Any Layout is Possible**



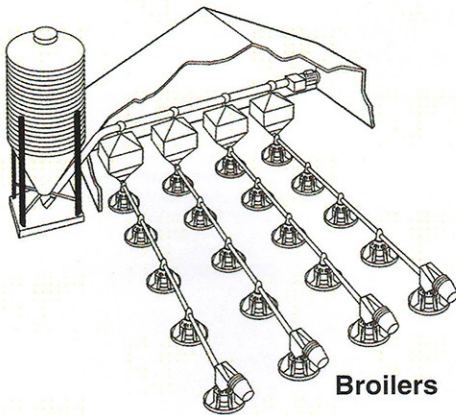
Swine Gestation



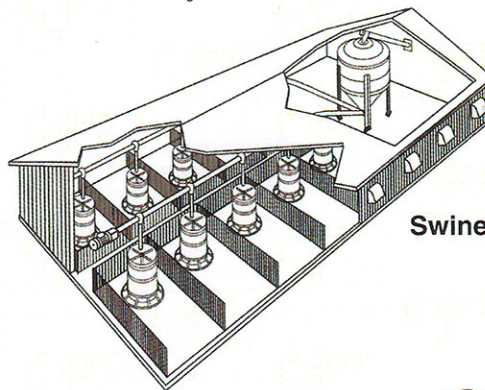
Dairy



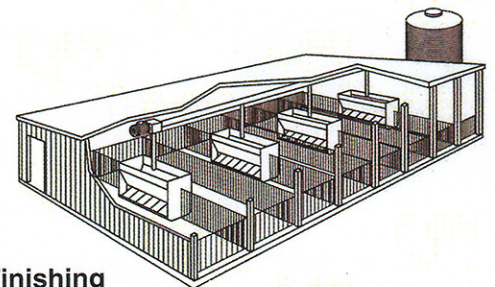
Swine Nursery



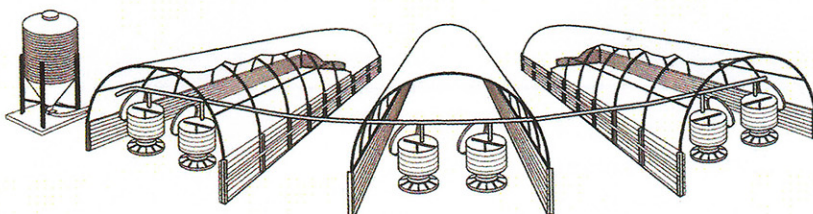
Broilers



Swine Finishing

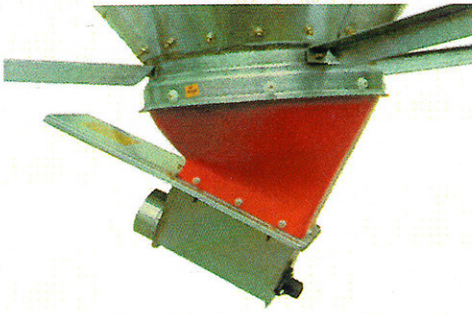


Game Bird Flight Pens



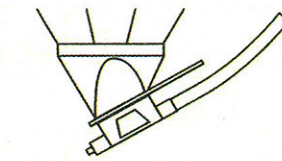
Feed Systems for Hoop Shelters

BOOT ASSEMBLY OPTIONS

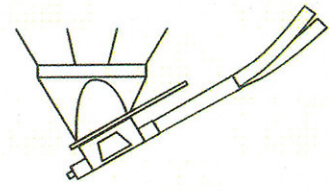


OPTIONAL 16" (40.6 cm) BOOT ASSEMBLY

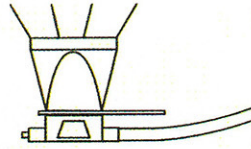
Includes 3 different DURAPRIDE® plastic transitions, 4" (10.2 cm), and 6" (15.2 cm) 30° galvanized, lower boots with slide shutoff valve. The boot is rounded and has a handy door to assure complete clean out. Our Boot Assemblies assure a smooth flow of feed to any delivery system.



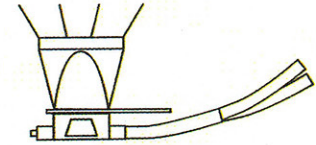
**30° Transition
Single Outlet Boot**



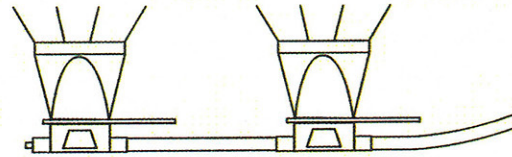
**30° Transition
Twin Outlet Boot**



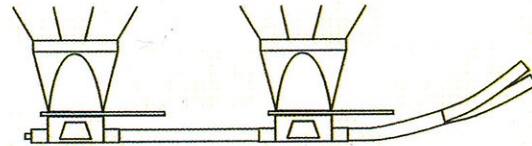
**Straight Transition
Single Outlet Boot**



**Straight Double Transition
Single Outlet Boot**



**Straight Transition
Single Outlet Pass Through Boot**



**Straight Transition
Twin Outlet Pass Through Boots**

SPECIFICATIONS, CAPACITIES, APPLICATIONS

MODEL NUMBER	Tube Outside Diameter	Feed Delivery Rate	Maximum Length	Maximum Length of Extension	Motor Size at Maximum Length	Corner Radius	Application
	Inches/MM	Lbs(kg)/MIN	Feet/m	Feet/m	HP	Feet/m	
Model 55 Duraflex Fill System	2.25/55	15 / 6.8	265 / 81	300 / 91	1/2	5 / 1.5	Low volume conveyance of dry ground feed and crumble type mash. Maximum particle size 1/8" dia. x 1/2" long. Maximum moisture content - 18%. Use for sow drop feeders and swine nurseries, broilers and "flag" systems.
Model 75 Duraflex Fill System	3.00/75	50 / 22.7	215 / 66	250 / 76	1	5 / 1.5	Dry ground feed and crumble type mash conveyance in swine and broiler finishing houses. Maximum particle size 1/8" dia. x 1/2" long. Maximum moisture content 18%.
Model 90 Duraflex Fill System	3.50/90	100 / 45.4	165 / 50	200 / 61	1	5 / 1.5	High volume conveyance of dry ground feed and crumble type mash. Maximum particle size 3/16" dia. x 1/2" long. Maximum moisture content - 18%. Use for large swine finishing houses, large broiler/breeder/turkey houses, cage layer and pullet houses.
Model 90HM Duraflex Fill System	3.50/90	50 / 22.7	165 / 50	150 / 46	1	5 / 1.5	Large pellet and shelled corn conveyance as well as ground feed and crumble type mash. Maximum particle size 3/16" dia. x 3/4" long. Maximum moisture content - 27%. Use for high moisture corn movement and dairy feeds.

Feed delivery rate based on 40 pounds of feed per cubic feet @ 348 rpm. Actual delivery rate may vary depending on system configuration and material conveyed.

HAWKEYE STEEL PRODUCTS, INC.

PO Box 2000, Houghton, Iowa 52631 USA • Web: www.hawkeysteel.com

Phone: 319/469-4141 • Fax: 319/469-4402 • E-mail: prideiowa@aol.com

COPYRIGHT © ALL RIGHTS RESERVED